



# Narendra

Redevelopment Project By ELITE GROUP

Where  
*Living*  
Feels Right

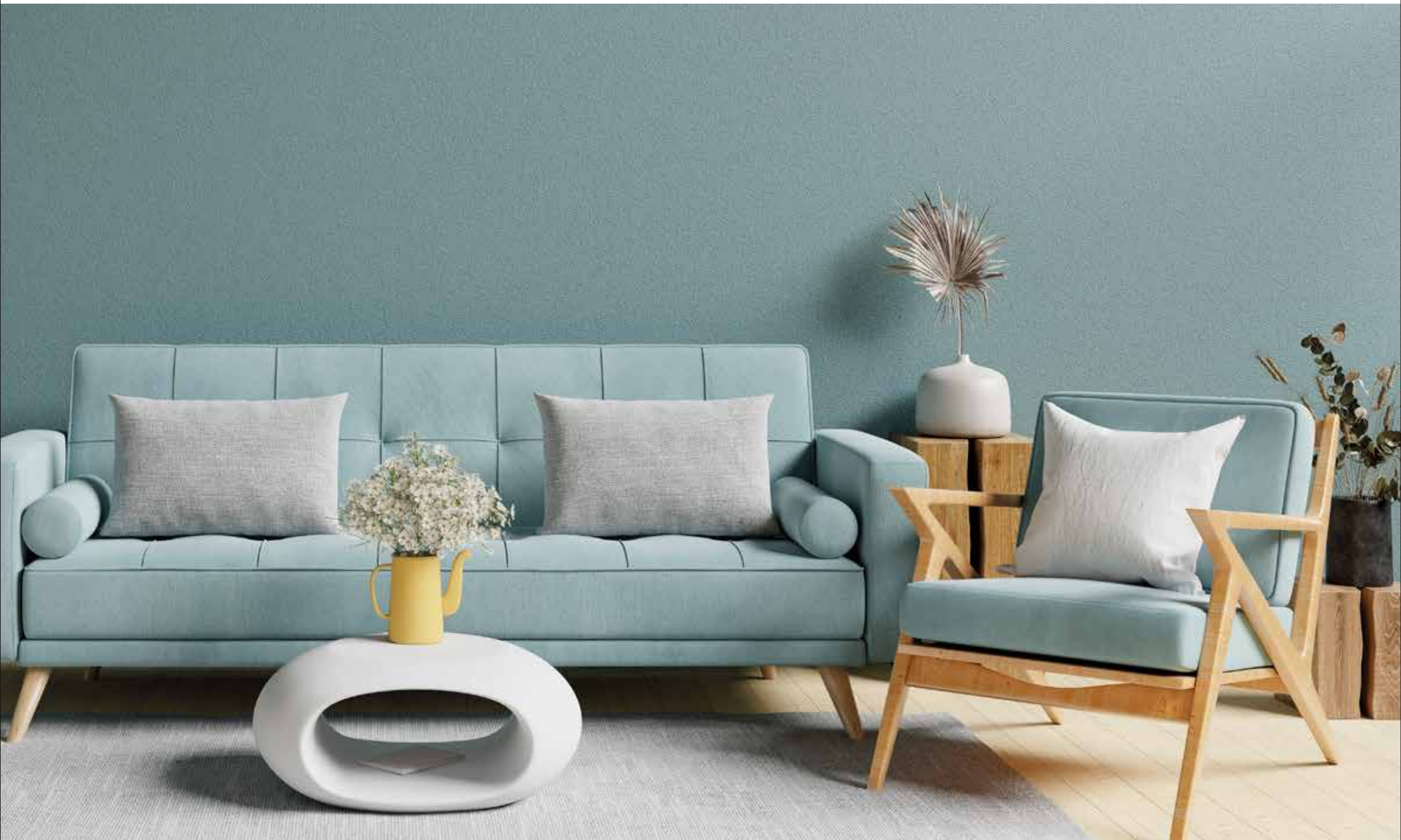
2, 3 & 4 BHK Elite Apartments

# ABOUT

Standing tall at 7 stories with the perfect balance of comfort, connectivity and luxury, "**Narendra**" welcomes you home with an elegant design lobby. The 2, 3 & 4 BHK apartments are surrounded by the city's hustle and the serenity and scenic view of the Hanuman Tekdi.

Come live at Narendra, where every experience is crafted for you. Hop to the nearest mall, restaurant or bar or take a walk amidst nature on the hill, all of this and more is just minutes away at this address. Embraced by nature and settled in the city, the residence complements your life at every step. Life at Narendra awaits.





A PROJECT BY







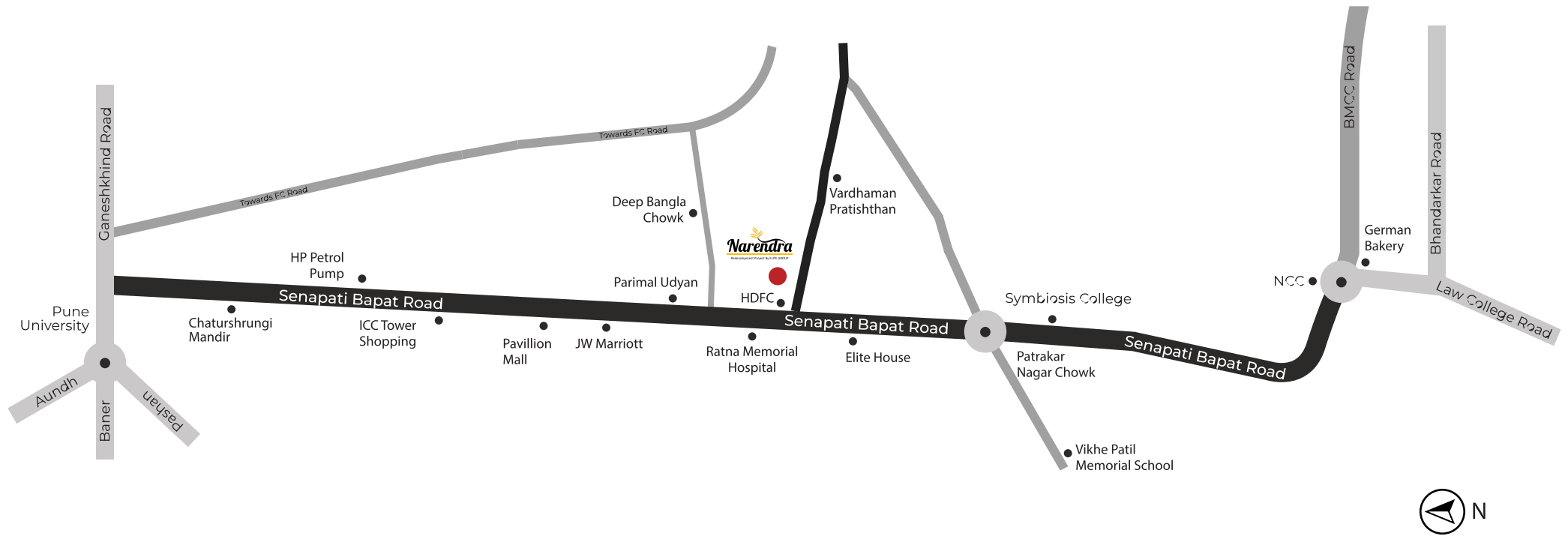


# LOCATION

With the splendid fusion of city life and nature, Senapati Bapat Road is the most loved and accessible location in town. Nestled in the city's centre and surrounded by well-known educational institutions such as Symbiosis, University of Pune, ILS and Fergusson College.

The residential address is close to nearby restaurants and bars, hospitals, petrol pumps, upbeat hangout areas and IT Parks. Live close to the city's heart and live life to the fullest with every experience.





## LOCATION HIGHLIGHTS



### Schools

- Vikhe Patil School
- Symbiosis School
- Vidya Bhavan
- Bharati Vidya Bhavan
- Kalmadi High School



### Colleges / Universities

- Symbiosis College
- Pune University
- BMCC
- ILS Law College
- Fergusson College
- Modern College



### Hospitals

- Ratna Hospital
- Lokmanya Hospital LHSS
- Joshi Hospital
- Cloudnine Hospital



### Banks

- SBI
- HDFC
- ICICI
- AXIS Bank



### Recreation

- Kamla Nehru Park
- Parimal Udyan
- Gajanan Maharaj Garden
- Hanuman Tekdi
- PVR ICON

\*All places within 2 km radius from the project

Location map is indicative and not to scale

# AMENITIES AND FACILITIES

A 7-storey residential address welcomes you with an elegant entrance leading to spacious 2, 3 & 4 BHK premium apartments with scenic views of the city and nature. Designed with high-speed elevators, recreational facilities on the terrace, featuring natural ventilation through ample openings, and a landscaped campus. A place where living feels right for you, Narendra.





To make your living experience an elevated one, Narendra is built with infrastructural facilities like no other.

- ✦ Grand Entrance Lobby
- ✦ Recreational Amenities on Terrace
- ✦ Entrance Lobby with Access Control
- ✦ Vehicle Charging Point
- ✦ Ample Stack Parking
- ✦ 2 Elevators with Power Backup
- ✦ Security Systems consisting of Video Door Phones
- ✦ Intercom Connections for Every Flat
- ✦ Intercom Connections to Lobby and Guardroom with CCTV
- ✦ Power Back-up Inverter for Common Lights
- ✦ Solar Power Plant for Lifts and Common Lights
- ✦ Rainwater Harvesting
- ✦ Separate MSEDCL Meter for Common Amenities
- ✦ Toughened Heat Soaked Glass Railings for Balconies







WHERE LIFE IS  
**COMFORT BEYOND  
MEASURE**



# Green Measures Implementation



Recharged Rainwater to Enhance Ground Water Table



Energy Efficient Lighting and Equipment in Common Area



Flats equipped with Fresh Air Ventilation and Ample Daylight



Low Flow Fixtures ensuring Water Saving



Effective Organic Waste Management System



Electric Charging Facility



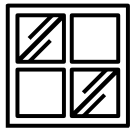
Low VOC Usage





# SPECIFICATIONS

The homes at Narendra are crafted with excellence in every ceiling and corner.



## Windows

- ▶ Sliding Windows with Mosquito Mesh
- ▶ Safety Grill
- ▶ Granite window sill
- ▶ Aluminium louvers / fixed glass with exhaust fan provision for washrooms



## Toilets

- ▶ Solar-heated Water in master bathroom
- ▶ Jaguar / equivalent chrome plated fittings for all washrooms
- ▶ Wall hung European water closet & wash hand basin
- ▶ Antiskid Tiles Flooring
- ▶ Designer Tiles dado in toilet



## Electricals

- ▶ Copper Concealed Wiring
- ▶ Adequate Electrical Points, MCBs
- ▶ Premium quality ultra sleek moduler switches
- ▶ AC Points in Bedroom and Living Room



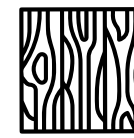
## Kitchen

- ▶ Granite top Kitchen platform
- ▶ Stainless Steel Sink
- ▶ Modular Kitchen and Trolleys
- ▶ Kitchen Chimney



## Doors

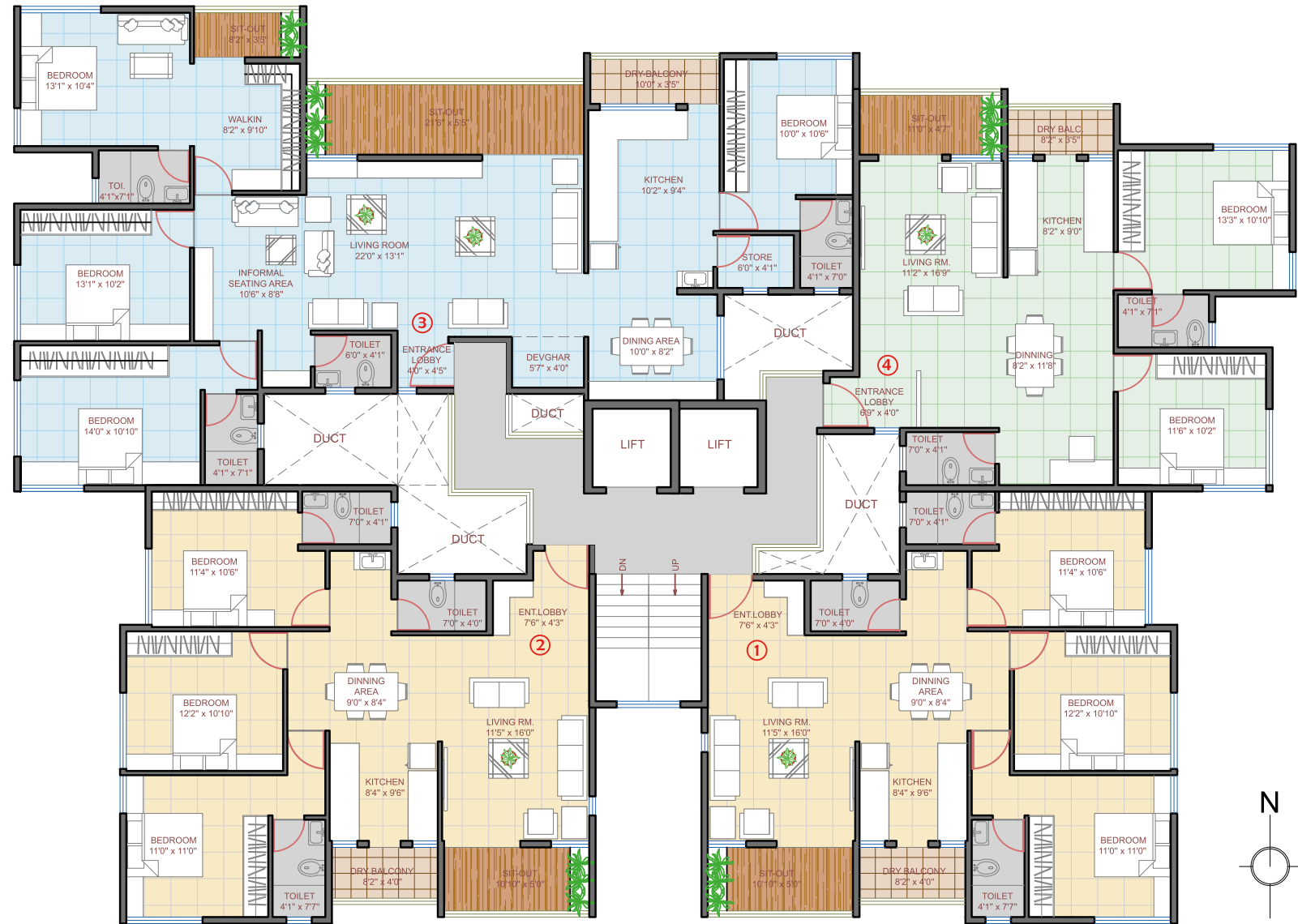
- ▶ Decorated Main Entrance Door
- ▶ Bedroom Door with Cylindrical Locks
- ▶ Laminate-finish Flush Doors
- ▶ Door frames in Granite



## Flooring

- ▶ Premium Quality Vitrified Tiles in Rooms and Corridors
- ▶ Wooden Flooring in the Master bedroom
- ▶ Tremix Basement flooring

# Floor Plan



## Area Statement

Flat No	Type	Rera Carpet (SqM)	Rera Carpet (Sqft)
1	3 BHK	96.34	1037
2	3 BHK	97.27	1047
3	4 BHK	157.38	1694
4	2 BHK	82.03	883

# 2 BHK





# 3 BHK



# 4 BHK











Office Address: Elite House, 93 B/6, Senapati Bapat Road, Shivajinagar, Pune - 411016  
98226 03565 | eliteinfrapl@gmail.com | www.eliteinfra.co

---



NARENDRA HOUSING SOCIETY

Plot No.: 395 & 396 | Behind HDFC Bank | Senapati Bapat Road, Shivajinagar, Pune - 411016

Maha RERA Registration Number - P52100050494

Disclaimer: All art renderings, illustrations, photographs and pictures contained in this advertisement are an artist's impression only and the same should not be construed to be the final image/view of the final project. Every interested purchaser should take note of this express representation. All specifications of the flat shall be as per the final agreement between the parties.